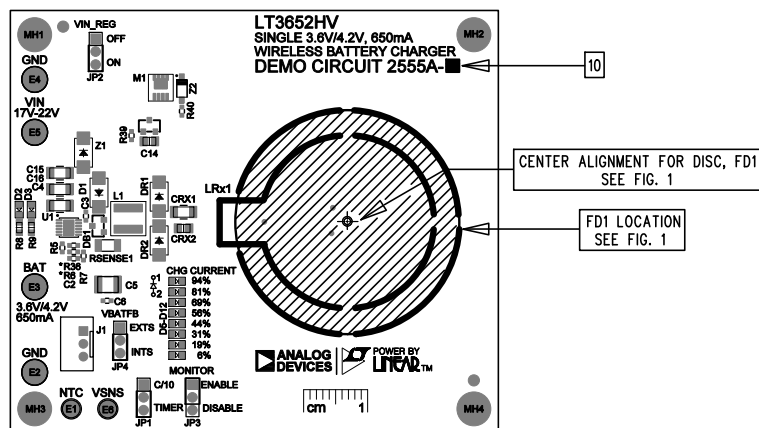
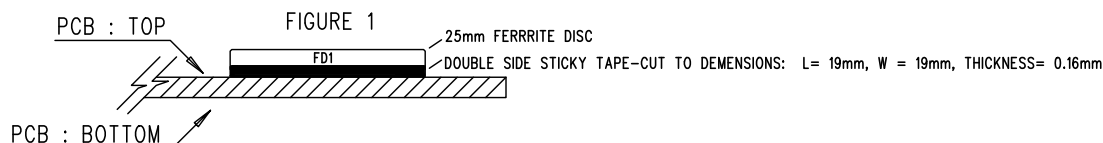


REVISION HISTORY				
ECO	REV	DESCRIPTION	APPR	DATE
-	4	PRODUCTION		06-17-19

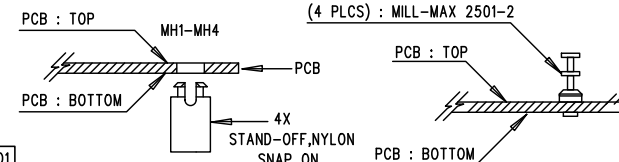
FERRITE DISC- FD1: ASSEMBLY DIAGRAM

PER FIG 1. - CUT AND PLACE DOUBLE SIDED STICKY TAPE MFG/PN, 3M, MMM109 WITHIN CENTER ALIGNMENT AREA FOR FD1.
- ALIGN DISC AND GENTLY PLACE FD1 WHERE TAPE IS - FD1, MFG/PN TDK, B67410A0223X195

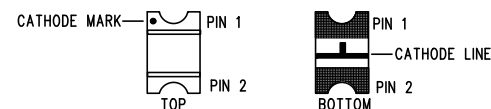


NOTES: UNLESS OTHERWISE SPECIFIED

1. WORKMANSHIP SHALL BE IN ACCORDANCE WITH IPC-A-610, CLASS 2.
2. ASSEMBLY PROCESS SHALL INCLUDE: REFLOW SOLDER TOP SIDE SMD. MAXIMUM SOLDER TEMPERATURE IS 240 DEGREES CELSIUS.
3. PARTS TO OMIT WILL BE SPECIFIED ON THE BILL OF MATERIALS. LOCATIONS OF OMITTED PARTS SHALL BE FREE OF SOLDER. MASK THE SOLDER STENCIL WHERE SMT PARTS ARE OMITTED.
4. INSTALL SHUNTS AS SHOWN ON ASSY DRAWING.
5. DEPANELIZE BOARDS AFTER ASSEMBLY AND ROUTE-OUT THE BREAKOUT TABS ON FOUR SIDES OF THE BOARD EDGE.
6. DO NOT APPLY ANY KIND OF ASSEMBLY STAMP OR QA STAMP TO ANY BOARD.
7. INSTALL TURRETS AND 4 STANDOFFS AT LOCATIONS SHOWN BELOW:
(2 PLCS) : MILL-MAX 2308-2
(4 PLCS) : MILL-MAX 2501-2



8. INSTALL 10 LED'S AS SHOWN BLEOW.





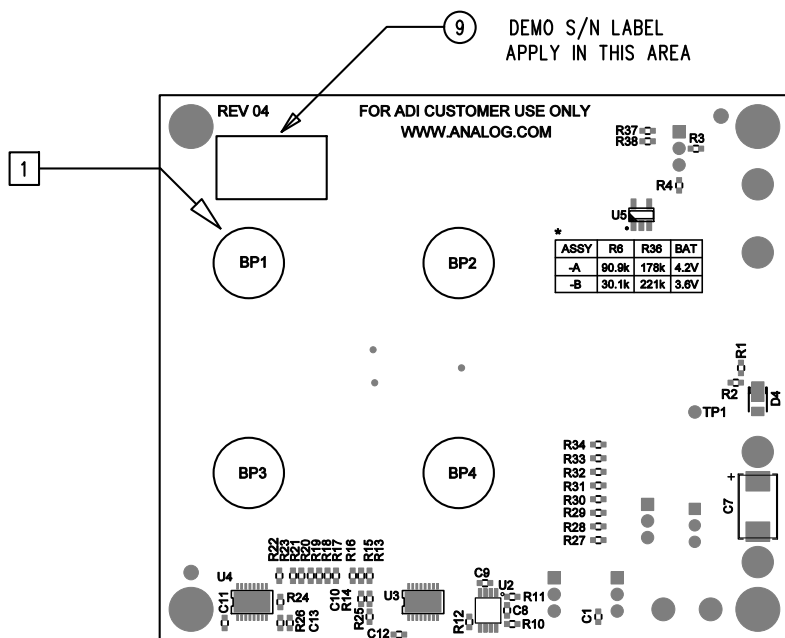
9. APPLY DEMO S/N AT AREA ON BOTTOM SIDE AS SHOWN ON SHEET 2.

10. THERE ARE 2 ASSEMBLY VERSIONS FOR THIS DESIGN: -A AND -B. PLEASE SEE BILL OF MATERIALS AND TABLE BELOW TO MARK EACH VERSION CORRECTLY BY BLACK PERMANENT MARKER.

* ASSEMBLY VARIANT TABLE

ASSY	R6	R36	BAT
-A	90.9k	178k	4.2V
-B	30.1k	221k	3.6V

APPROVALS		 ANALOG DEVICES		 POWER BY LINEAR™	
PCB DES	NC	FOR ADI CUSTOMER USE ONLY			
APP ENG	WL	TITLE: TOP ASSEMBLY DRAWING			
		SINGLE 3.6V/4.2V, 650mA			
		WIRELESS BATTERY CHARGER			
		SIZE	IC NO.	LT3652HV	REV.
		N/A	DC2555A-A/B		04
SCALE = NONE					SHT 1 OF 1



NOTES: UNLESS OTHERWISE SPECIFIED

1. BP1-BP4 SELF ADHESIVE BUMPER LOCATIONS.

APPROVALS		ANALOG DEVICES POWER BY LINEAR™ FOR ADI CUSTOMER USE ONLY	
PCB DES	NC	TITLE: TOP ASSEMBLY DRAWING SINGLE 3.6V/4.2V, 650mA WIRELESS BATTERY CHARGER	
APP ENG	WL		
SCALE = NONE		SIZE N/A	IC NO. LT3652HV DC2555A-A/B
		REV. 04	
		SHT 2 OF 2	